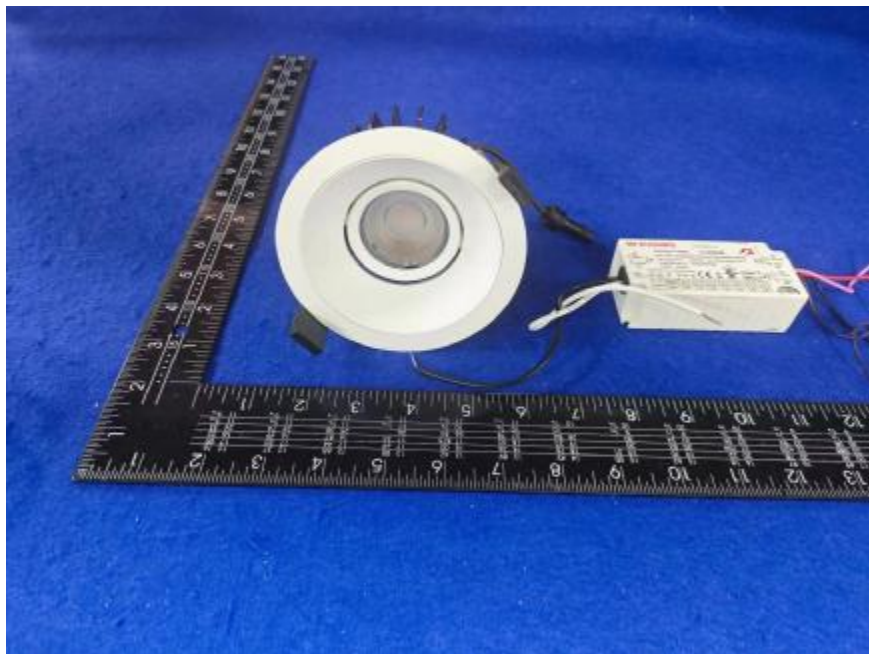


Luminaire Photograph



Light Output Ratio:	66.8%	
Luminaire Power:	17.3 W	
SHR Nominal:	0.75	Calculated using the TM5
SHR Maximum:	0.80	fine grid method.

C Range: 0 - 360DEG
C Interval: 30.0DEG
Test Speed: HIGH
Temperature: 25.3 °C
Operators: zoe
Test Date: 2023-7-12

Range: 0 - 180DEG
Interval: 1.0DEG
Test System: EVERFINE GO-SPEX500_V1 SYSTEM V2.00.461
Humidity: 65.0%
Test Distance: 3.160m [K=1.0000]
Remarks: LAMP: BXRV-DR-1830G-1000-K-23 Ra: 90
LENS: PM-1096C 50R
DRIVER: PUP20A-1WMC 450mA
30minutes warm-up

LUMINOUS INTENSITY DISTRIBUTION DIAGRAM

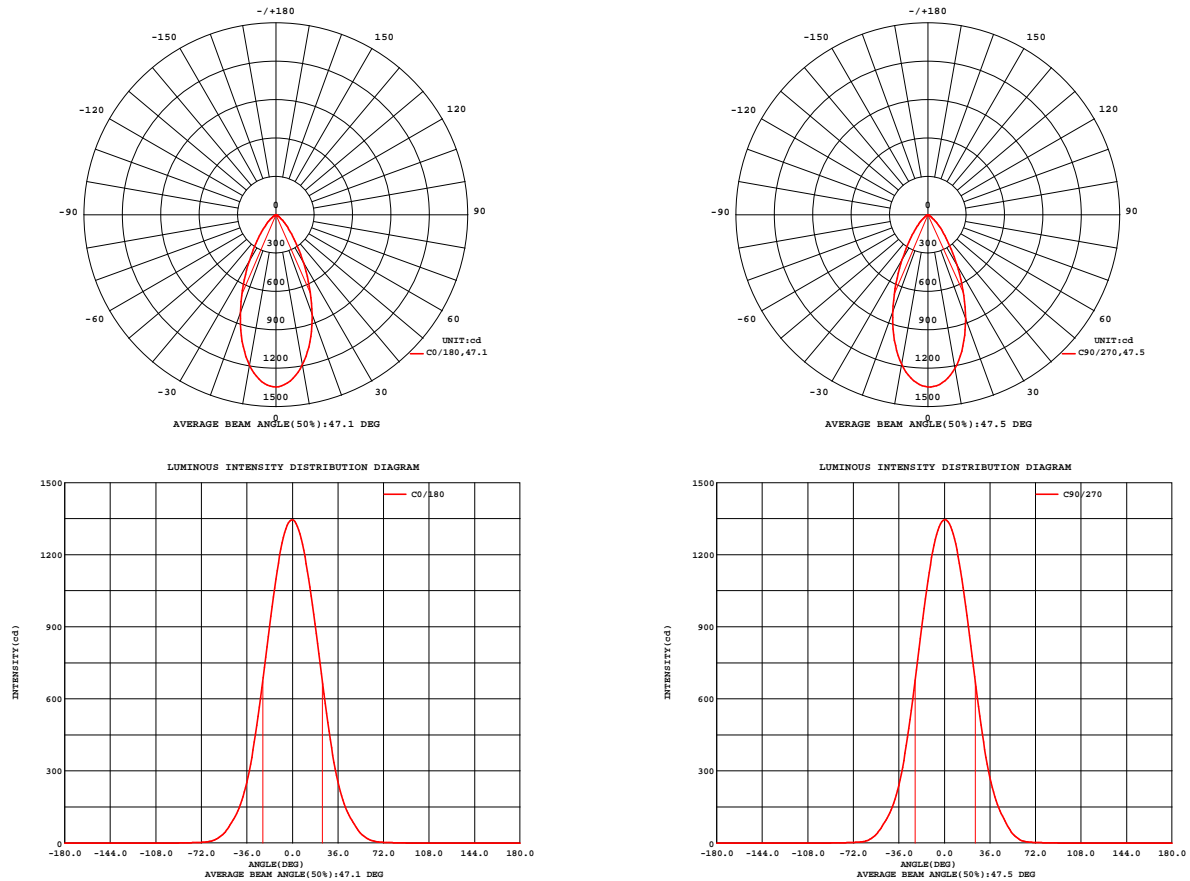


Fig. C0/C180

Fig. C90/C270

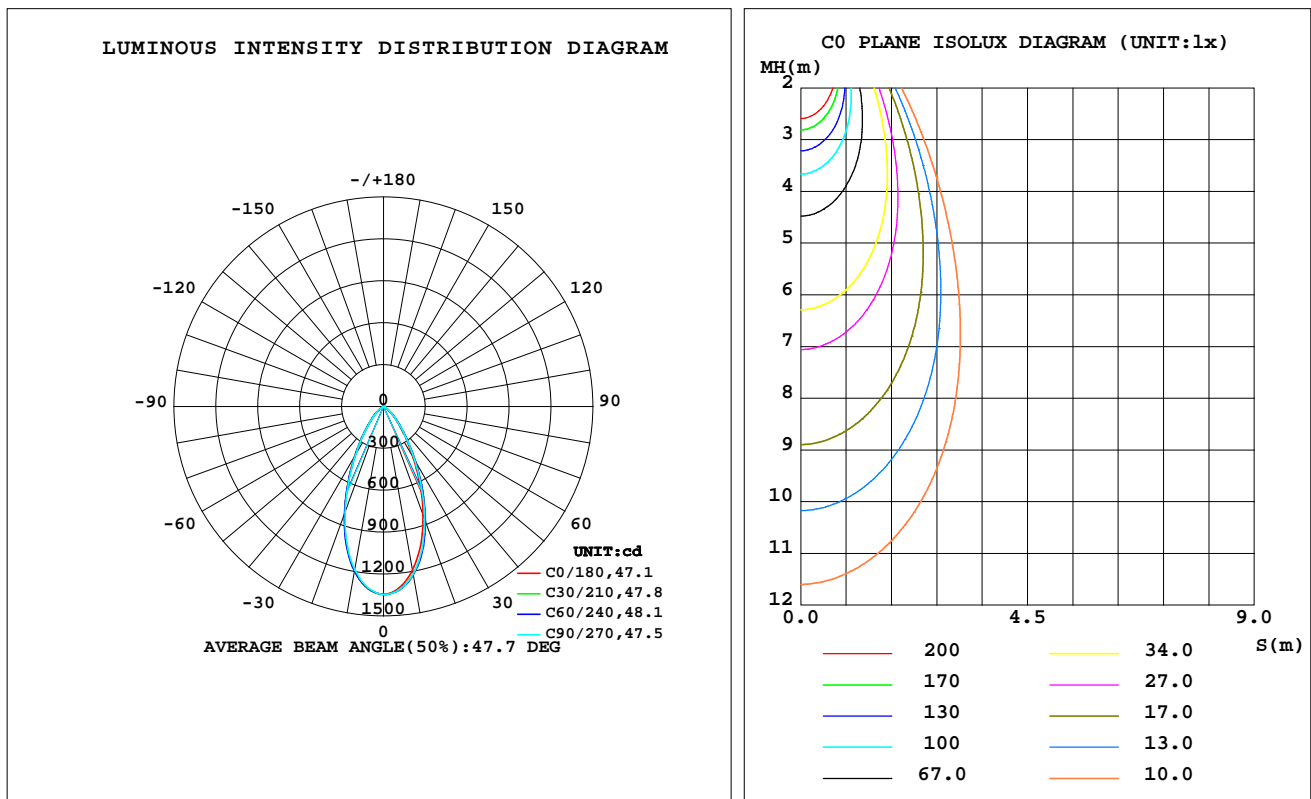
C Range: 0 - 360DEG
C Interval: 30.0DEG
Test Speed: HIGH
Temperature: 25.3 °C
Operators: zoe
Test Date: 2023-7-12

Range: 0 - 180DEG
Interval: 1.0DEG
Test System: EVERFINE GO-SPEX500_V1 SYSTEM V2.00.461
Humidity: 65.0%
Test Distance: 3.160m [K=1.0000]
Remarks: LAMP: BXR-V-DR-1830G-1000-K-23 Ra: 90
LENS: PM-1096C 50R
DRIVER: PUP20A-1WMC 450mA
30minutes warm-up

LUMINAIRE PHOTOMETRIC TEST REPORT

Test:U:120.07V I:0.1449A P:17.299W PF:0.9932 Freq:59.98Hz Lamp Flux:1493.63x1 lm		
NAME: 2118.192-LEA-15-DW	TYPE:	WEIGHT:
SPEC.: 3000K	DIM.:	SERIAL No.: 2307120894
MFR.: RISE	SUR.: 0.0063585m2	Shielding Angle:

DATA OF LAMP		PHOTOMETRIC DATA Eff: 57.65 lm/W			
MODEL	Bridgelux	Imax(cd)	1346	S/MH(C0/180)	0.73
NOMINAL POWER(W)	17	LOR(%)	66.8	S/MH(C90/270)	0.73
RATED VOLTAGE(V)	120	TOTAL FLUX(lm)	997.28	UP,DN(C0-180)	0.0,34.3
NOMINAL FLUX(lm)	1493.63	CIE CLASS	DIRECT	UP,DN(C180-360)	0.0,32.4
LAMPS INSIDE	1	up(%)	0.0	CIBSE SHR NOM	0.75
TEST VOLTAGE(V)	120	down(%)	66.8	CIBSE SHR MAX	0.80



C Range: 0 - 360DEG
C Interval: 30.0DEG
Test Speed: HIGH
Temperature:25.3℃
Operators:zoe
Test Date:2023-7-12

Range: 0 - 180DEG
Interval: 1.0DEG
Test System:EVERFINE GO-SPEX500_V1 SYSTEM V2.00.461
Humidity:65.0%
Test Distance:3.160m [K=1.0000]
Remarks: LAMP:BXRV-DR-1830G-1000-K-23 Ra:90
LENS: PM-1096C 50R
DRIVER: PUP20A-1WMC 450mA
30minutes warm-up

ZONAL FLUX DIAGRAM

ZONAL FLUX DIAGRAM:

	C0	C45	C90	C135	C180	C225	C270	C315		zone	total	%lum,lamp
10	1192	1222	1219	1197	1196	1198	1187	1179	0- 10	121.3	121.3	12.2,8.12
20	830.0	874.2	862.8	825.3	816.4	816.3	806.9	802.7	10- 20	285.2	406.5	40.8,27.2
30	430.2	462.2	455.1	431.2	419.9	411.1	405.7	408.7	20- 30	281.9	688.4	69,46.1
40	178.8	194.5	192.9	182.3	175.9	168.7	165.5	168.4	30- 40	177.9	866.4	86.9,58
50	68.61	73.28	70.36	69.47	67.24	63.57	61.28	64.33	40- 50	89.14	955.5	95.8,64
60	16.62	16.08	12.82	16.16	16.74	14.15	11.65	14.97	50- 60	32.47	988.0	99.1,66.1
70	3.161	2.901	2.558	2.870	3.082	2.828	2.705	2.856	60- 70	6.814	994.8	99.7,66.6
80	1.263	1.084	0.9113	1.102	1.314	1.064	0.9268	1.093	70- 80	2.071	996.9	100,66.7
90	0	0	0	0	0	0	0	0	80- 90	0.4270	997.3	100,66.8
100	0	0	0	0	0	0	0	0	90-100	0	997.3	100,66.8
110	0	0	0	0	0	0	0	0	100-110	0	997.3	100,66.8
120	0	0	0	0	0	0	0	0	110-120	0	997.3	100,66.8
130	0	0	0	0	0	0	0	0	120-130	0	997.3	100,66.8
140	0	0	0	0	0	0	0	0	130-140	0	997.3	100,66.8
150	0	0	0	0	0	0	0	0	140-150	0	997.3	100,66.8
160	0	0	0	0	0	0	0	0	150-160	0	997.3	100,66.8
170	0	0	0	0	0	0	0	0	160-170	0	997.3	100,66.8
180	0	0	0	0	0	0	0	0	170-180	0	997.3	100,66.8
DEG	LUMINOUS INTENSITY:cd									UNIT:lm		

C Range: 0 - 360DEG
C Interval: 30.0DEG
Test Speed: HIGH
Temperature:25.3℃
Operators:zoe
Test Date:2023-7-12

Range: 0 - 180DEG
Interval: 1.0DEG
Test System:EVERFINE GO-SPEX500_V1 SYSTEM V2.00.461
Humidity:65.0%
Test Distance:3.160m [K=1.0000]
Remarks: LAMP:BXRV-DR-1830G-1000-K-23 Ra:90
LENS: PM-1096C 50R
DRIVER: PUP20A-1WMC 450mA
30minutes warm-up

LUMINANCE LIMITATION CURVES

Test:U:120.07V I:0.1449A P:17.299W PF:0.9932 Freq:59.98Hz
Lamp Flux:1493.63x1 lm

NAME: 2118.192-LEA-15-DW

TYPE:

WEIGHT:

SPEC.: 3000K

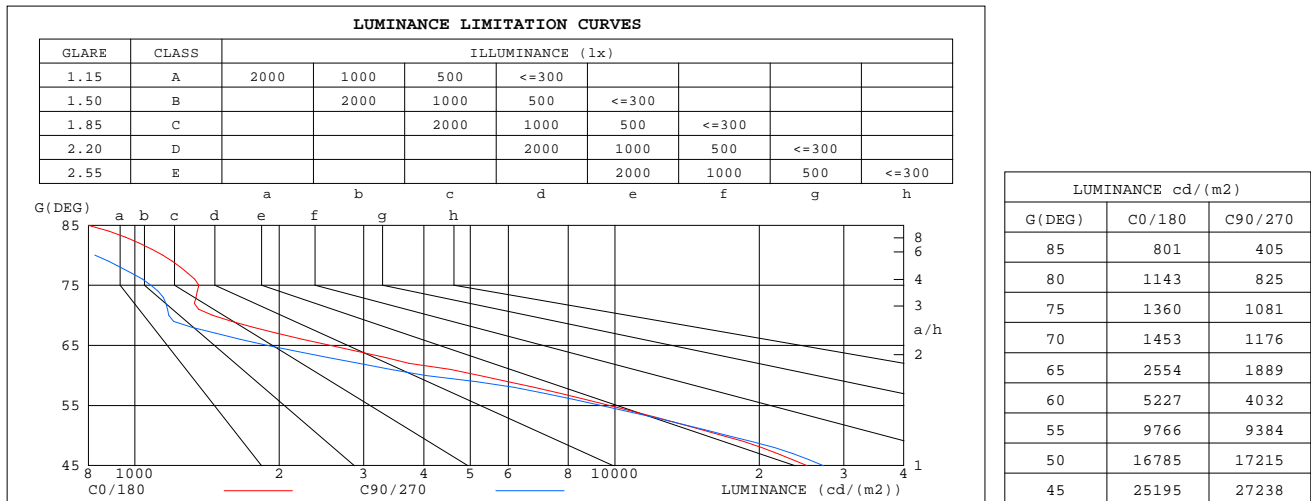
DIM.:

SERIAL No.: 2307120894

MFR.: RISE

SUR.: 0.0063585m2

Shielding Angle:



C Range: 0 - 360DEG
C Interval: 30.0DEG
Test Speed: HIGH
Temperature:25.3℃
Operators:zoe
Test Date:2023-7-12

Range: 0 - 180DEG
Interval: 1.0DEG
Test System:EVERFINE GO-SPEX500_V1 SYSTEM V2.00.461
Humidity:65.0%
Test Distance:3.160m [K=1.0000]
Remarks: LAMP:BXRV-DR-1830G-1000-K-23 Ra:90
LENS: PM-1096C 50R
DRIVER: PUP20A-1WMC 450mA
30minutes warm-up

CU AND LUMINAIRE BUDGETARY ESTIMATE DIAGRAM

Test:U:120.07V I:0.1449A P:17.299W PF:0.9932 Freq:59.98Hz
Lamp Flux:1493.63lx1 lm

NAME: 2118.192-LEA-15-DW

TYPE:

WEIGHT:

SPEC.: 3000K

DIM.:

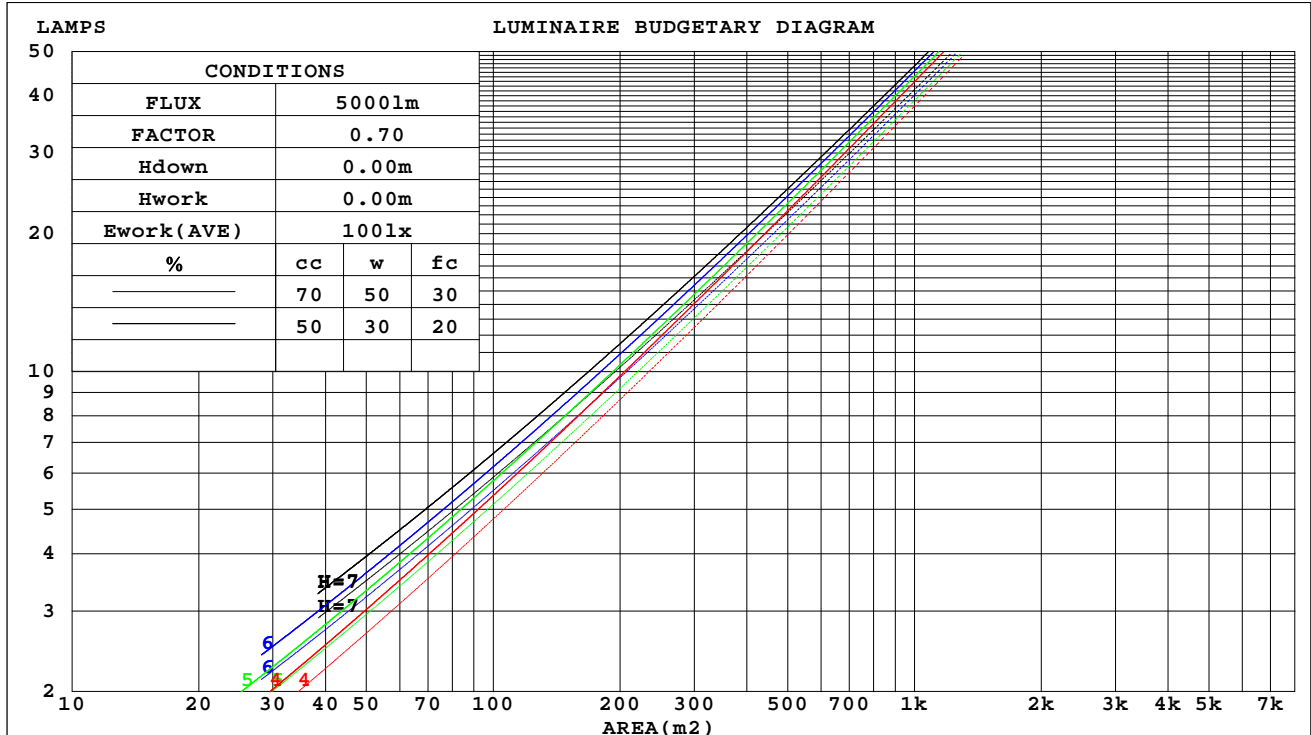
SERIAL No.: 2307120894

MFR.: RISE

SUR.: 0.0063585m2

Shielding Angle:

cc	80%			70%			50%			30%			10%			0
w	50%	30%	10%	50%	30%	10%	50%	30%	10%	50%	30%	10%	50%	30%	10%	0
fc	20%			20%			20%			20%			20%			0
RCR	RCR:Room Cavity Ratio															



C Range: 0 - 360DEG
C Interval: 30.0DEG
Test Speed: HIGH
Temperature:25.3℃
Operators:zoe
Test Date:2023-7-12

Range: 0 - 180DEG
Interval: 1.0DEG
Test System:EVERFINE GO-SPEX500_V1 SYSTEM V2.00.461
Humidity:65.0%
Test Distance:3.160m [K=1.0000]
Remarks: LAMP:BXRV-DR-1830G-1000-K-23 Ra:90
LENS: PM-1096C 50R
DRIVER: PUP20A-1WMC 450mA
30minutes warm-up

WEC AND CCEC

Test:U:120.07V I:0.1449A P:17.299W PF:0.9932 Freq:59.98Hz Lamp Flux:1493.63x1 lm		
NAME: 2118.192-LEA-15-DW	TYPE:	WEIGHT:
SPEC.: 3000K	DIM.:	SERIAL No.: 2307120894
MFR.: RISE	SUR.: 0.0063585m2	Shielding Angle:

cc	80%			70%			50%			30%			10%			0	
w	50%	30%	10%	50%	30%	10%	50%	30%	10%	50%	30%	10%	50%	30%	10%	0	
fc	20%			20%			20%			20%			20%			0	
RCR	RCR:Room Cavity Ratio						Wall Exitance Coefficients(WEC)										
0.0																	
1.0	.121	.069	.022	.117	.067	.021	.109	.062	.020	.101	.058	.019	.094	.054	.017		
2.0	.117	.064	.020	.113	.062	.019	.106	.059	.018	.099	.056	.017	.093	.053	.017		
3.0	.111	.059	.018	.108	.058	.017	.102	.055	.017	.096	.053	.016	.091	.050	.016		
4.0	.106	.055	.016	.103	.054	.016	.098	.052	.016	.093	.050	.015	.088	.048	.015		
5.0	.101	.051	.015	.098	.051	.015	.094	.049	.014	.090	.047	.014	.086	.046	.014		
6.0	.096	.048	.014	.094	.047	.014	.090	.046	.013	.086	.045	.013	.083	.043	.013		
7.0	.092	.045	.013	.090	.045	.013	.086	.044	.013	.083	.042	.012	.080	.041	.012		
8.0	.087	.043	.012	.086	.042	.012	.083	.041	.012	.080	.040	.012	.077	.039	.011		
9.0	.084	.040	.011	.082	.040	.011	.079	.039	.011	.077	.038	.011	.074	.038	.011		
10.0	.080	.038	.011	.079	.038	.011	.076	.037	.011	.074	.037	.010	.071	.036	.010		

cc	80%			70%			50%			30%			10%			0
w	50%	30%	10%	50%	30%	10%	50%	30%	10%	50%	30%	10%	50%	30%	10%	0
fc	20%			20%			20%			20%			20%			0
RCR	RCR:Room Cavity Ratio			Ceiling Cavity Exitance Coefficients(CCEC)												
0.0	.127	.127	.127	.109	.109	.109	.074	.074	.074	.043	.043	.043	.014	.014	.014	
1.0	.114	.105	.096	.098	.090	.083	.067	.062	.057	.039	.036	.033	.012	.012	.011	
2.0	.105	.088	.075	.090	.076	.065	.061	.053	.045	.035	.031	.026	.011	.010	.009	
3.0	.097	.076	.059	.083	.065	.051	.057	.045	.036	.033	.027	.021	.011	.009	.007	
4.0	.090	.066	.048	.077	.057	.042	.053	.040	.029	.031	.023	.017	.010	.008	.006	
5.0	.084	.058	.039	.072	.051	.034	.050	.035	.024	.029	.021	.014	.009	.007	.005	
6.0	.079	.052	.033	.068	.045	.029	.047	.032	.020	.027	.019	.012	.009	.006	.004	
7.0	.075	.047	.028	.064	.041	.024	.044	.029	.017	.026	.017	.010	.008	.006	.003	
8.0	.071	.043	.024	.061	.037	.021	.042	.026	.015	.025	.015	.009	.008	.005	.003	
9.0	.068	.040	.021	.058	.034	.018	.040	.024	.013	.024	.014	.008	.008	.005	.003	
10.0	.064	.037	.018	.056	.032	.016	.039	.022	.011	.022	.013	.007	.007	.004	.002	

C Range: 0 - 360DEG
C Interval: 30.0DEG
Test Speed: HIGH
Temperature:25.3℃
Operators:zoe
Test Date:2023-7-12

Range: 0 - 180DEG
Interval: 1.0DEG
Test System:EVERFINE GO-SPEX500_V1 SYSTEM V2.00.461
Humidity:65.0%
Test Distance:3.160m [K=1.0000]
Remarks: LAMP:BXRV-DR-1830G-1000-K-23 Ra:90
LENS: PM-1096C 50R
DRIVER: PUP20A-1WMC 450mA
30minutes warm-up

UGR(Unified Glare Rating) Table

Test:U:120.07V I:0.1449A P:17.299W PF:0.9932 Freq:59.98Hz Lamp Flux:1493.63x1 lm										
NAME: 2118.192-LEA-15-DW					TYPE:			WEIGHT:		
SPEC.: 3000K					DIM.:			SERIAL No.: 2307120894		
MFR.: RISE					SUR.: 0.0063585m2			Shielding Angle:		
ceiling/cavity	0.7	0.7	0.5	0.5	0.3	0.7	0.7	0.5	0.5	0.3
walls	0.5	0.3	0.5	0.3	0.3	0.5	0.3	0.5	0.3	0.3
working plane	0.2	0.2	0.2	0.2	0.2	0.2	0.2	0.2	0.2	0.2
Room dimensions	Viewed crosswise					Viewed endwise				
x = 2H y = 2H	17.9	18.8	18.1	19.0	19.2	18.0	18.9	18.2	19.1	19.3
3H	17.7	18.6	18.0	18.8	19.0	17.8	18.7	18.1	18.9	19.1
4H	17.6	18.5	17.9	18.7	18.9	17.7	18.6	18.0	18.8	19.0
6H	17.6	18.4	17.9	18.6	18.8	17.6	18.4	17.9	18.7	18.9
8H	17.5	18.3	17.8	18.5	18.8	17.6	18.4	17.9	18.6	18.9
12H	17.5	18.2	17.8	18.5	18.8	17.5	18.3	17.9	18.5	18.8
4H 2H	17.7	18.5	18.0	18.7	19.0	17.8	18.6	18.1	18.8	19.1
3H	17.5	18.3	17.9	18.5	18.8	17.6	18.3	17.9	18.6	18.9
4H	17.5	18.1	17.8	18.4	18.7	17.5	18.2	17.9	18.5	18.8
6H	17.4	18.0	17.8	18.3	18.6	17.4	18.0	17.8	18.4	18.7
8H	17.3	17.9	17.7	18.2	18.6	17.4	17.9	17.8	18.3	18.7
12H	17.3	17.8	17.7	18.2	18.5	17.3	17.8	17.8	18.2	18.6
8H 4H	17.3	17.9	17.7	18.2	18.6	17.4	17.9	17.8	18.3	18.7
6H	17.2	17.7	17.7	18.1	18.5	17.3	17.7	17.7	18.1	18.6
8H	17.2	17.6	17.6	18.0	18.4	17.3	17.6	17.7	18.1	18.5
12H	17.2	17.5	17.6	17.9	18.4	17.2	17.5	17.7	18.0	18.4
12H 4H	17.3	17.8	17.7	18.1	18.5	17.3	17.8	17.8	18.2	18.6
6H	17.2	17.6	17.6	18.0	18.4	17.3	17.6	17.7	18.1	18.5
8H	17.1	17.5	17.6	17.9	18.4	17.2	17.5	17.7	18.0	18.4
Variations with the observer position at spacings(CIE Pub.117):										
S = 1.0H	+ 2.2 / - 5.7					+ 2.3 / - 6.5				
1.5H	+ 2.7 / - 3.6					+ 3.0 / - 4.3				
2.0H	+ 4.4 / - 6.9					+ 4.8 / - 8.3				

CIE Pub.117, 1494 lm Total Lamp Luminous Flux Correct (8log(F/F0) = 1.4)
Area: 0.0063585 m2

C Range: 0 - 360DEG
C Interval: 30.0DEG
Test Speed: HIGH
Temperature:25.3℃
Operators:zoe
Test Date:2023-7-12

Range: 0 - 180DEG
Interval: 1.0DEG
Test System:EVERFINE GO-SPEX500_V1 SYSTEM V2.00.461
Humidity:65.0%
Test Distance:3.160m [K=1.0000]
Remarks: LAMP:BXRV-DR-1830G-1000-K-23 Ra:90
LENS: PM-1096C 50R
DRIVER: PUP20A-1WMC 450mA
30minutes warm-up

UTILIZATION FACTORS TABLE

Test:U:120.07V I:0.1449A P:17.299W PF:0.9932 Freq:59.98Hz Lamp Flux:1493.63x1 lm		
NAME: 2118.192-LEA-15-DW	TYPE:	WEIGHT:
SPEC.: 3000K	DIM.:	SERIAL No.: 2307120894
MFR.: RISE	SUR.: 0.0063585m2	Shielding Angle:

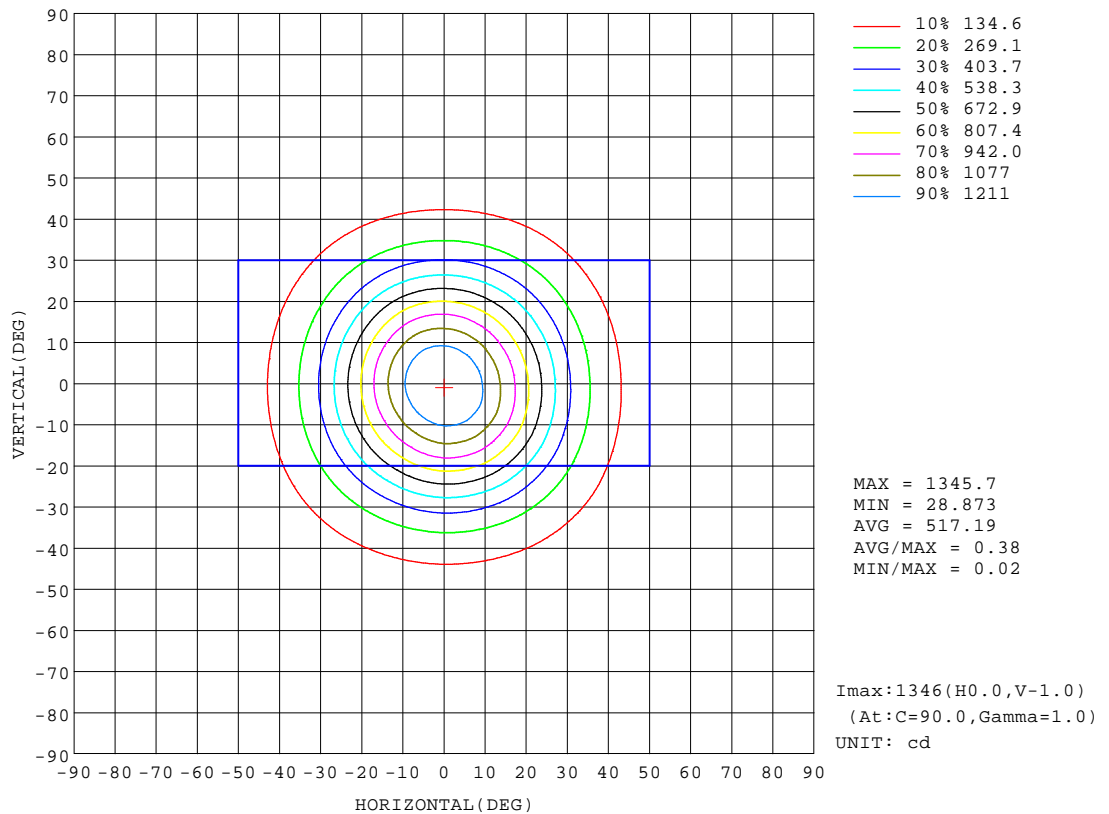
REFLECTANCE										
Ceiling	0.8	0.8	0.8	0.7	0.7	0.7	0.5	0.5	0.5	0
Walls	0.7	0.5	0.3	0.7	0.5	0.3	0.7	0.5	0.3	0
Working plane	0.2	0.2	0.2	0.2	0.2	0.2	0.2	0.2	0.2	0
ROOM INDEX	UTILIZATION FACTORS(PERCENT) $k(RI) \times RCR = 5$									
k = 0.60	55	51	48	55	51	48	55	50	48	45
0.80	61	57	54	60	56	54	60	56	53	51
1.00	65	60	58	64	60	58	63	60	57	54
1.25	68	64	61	67	63	61	65	63	60	57
1.50	70	66	64	69	66	63	67	65	63	59
2.00	72	69	66	71	68	66	69	67	65	61
2.50	73	70	68	72	69	67	70	68	66	62
3.00	74	72	70	73	71	69	71	69	67	63
4.00	76	74	72	74	72	71	72	70	69	64
5.00	76	75	73	75	73	72	72	71	70	65
ROOM INDEX	UF(total)									Direct
According to DIN EN 13032-2 2004			Suspended					SHRNOM = 1.25		

C Range: 0 - 360DEG
C Interval: 30.0DEG
Test Speed: HIGH
Temperature:25.3℃
Operators:zoe
Test Date:2023-7-12

Range: 0 - 180DEG
Interval: 1.0DEG
Test System:EVERFINE GO-SPEX500_V1 SYSTEM V2.00.461
Humidity:65.0%
Test Distance:3.160m [K=1.0000]
Remarks: LAMP:BXRV-DR-1830G-1000-K-23 Ra:90
LENS: PM-1096C 50R
DRIVER: PUP20A-1WMC 450mA
30minutes warm-up

ISOCANDELA DIAGRAM

Test:U:120.07V I:0.1449A P:17.299W PF:0.9932 Freq:59.98Hz Lamp Flux:1493.63x1 lm		
NAME: 2118.192-LEA-15-DW	TYPE:	WEIGHT:
SPEC.: 3000K	DIM.:	SERIAL No.: 2307120894
MFR.: RISE	SUR.: 0.0063585m2	Shielding Angle:

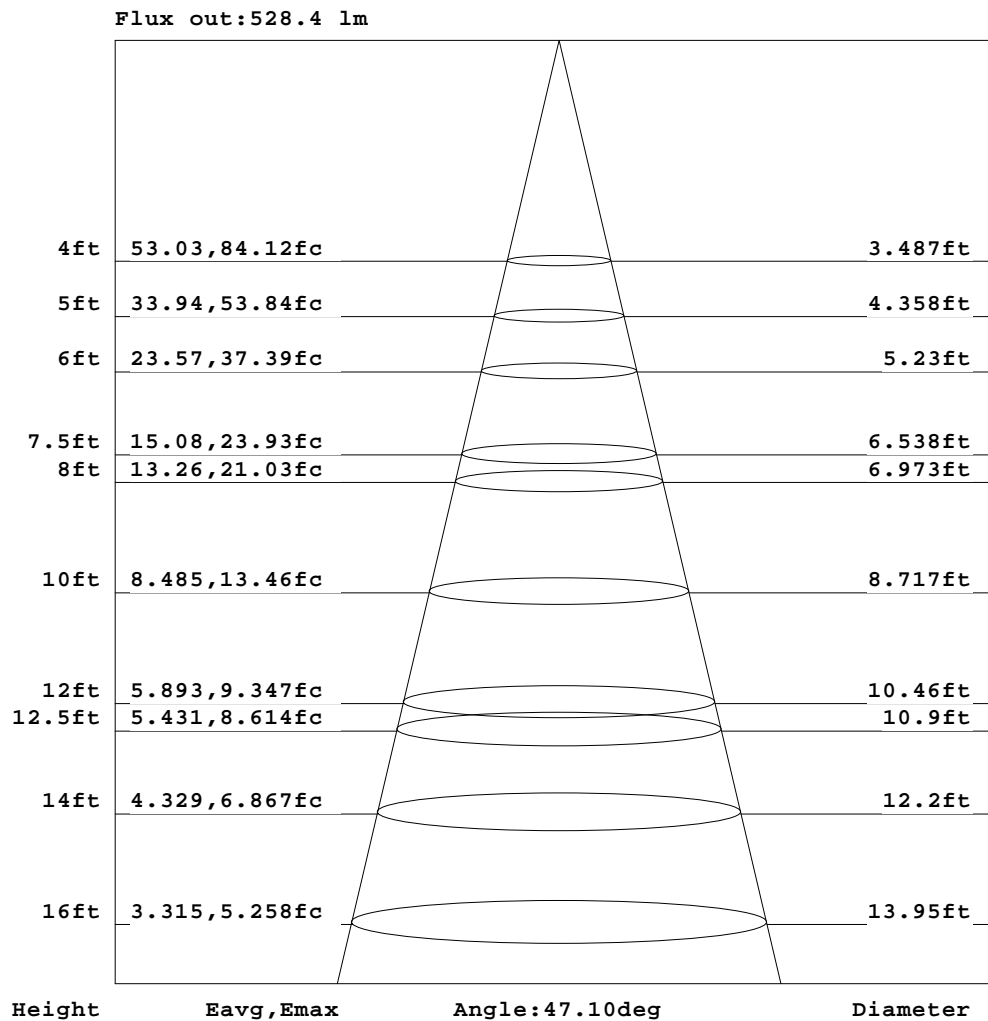


C Range: 0 - 360DEG
C Interval: 30.0DEG
Test Speed: HIGH
Temperature:25.3℃
Operators:zoe
Test Date:2023-7-12

Range: 0 - 180DEG
Interval: 1.0DEG
Test System:EVERFINE GO-SPEX500_V1 SYSTEM V2.00.461
Humidity:65.0%
Test Distance:3.160m [K=1.0000]
Remarks: LAMP:BXR-V-DR-1830G-1000-K-23 Ra:90
LENS: PM-1096C 50R
DRIVER: PUP20A-1WMC 450mA
30minutes warm-up

AAI Figure

Test:U:120.07V I:0.1449A P:17.299W PF:0.9932 Freq:59.98Hz Lamp Flux:1493.63x1 lm		
NAME: 2118.192-LEA-15-DW	TYPE:	WEIGHT:
SPEC.: 3000K	DIM.:	SERIAL No.: 2307120894
MFR.: RISE	SUR.: 0.0063585m2	Shielding Angle:



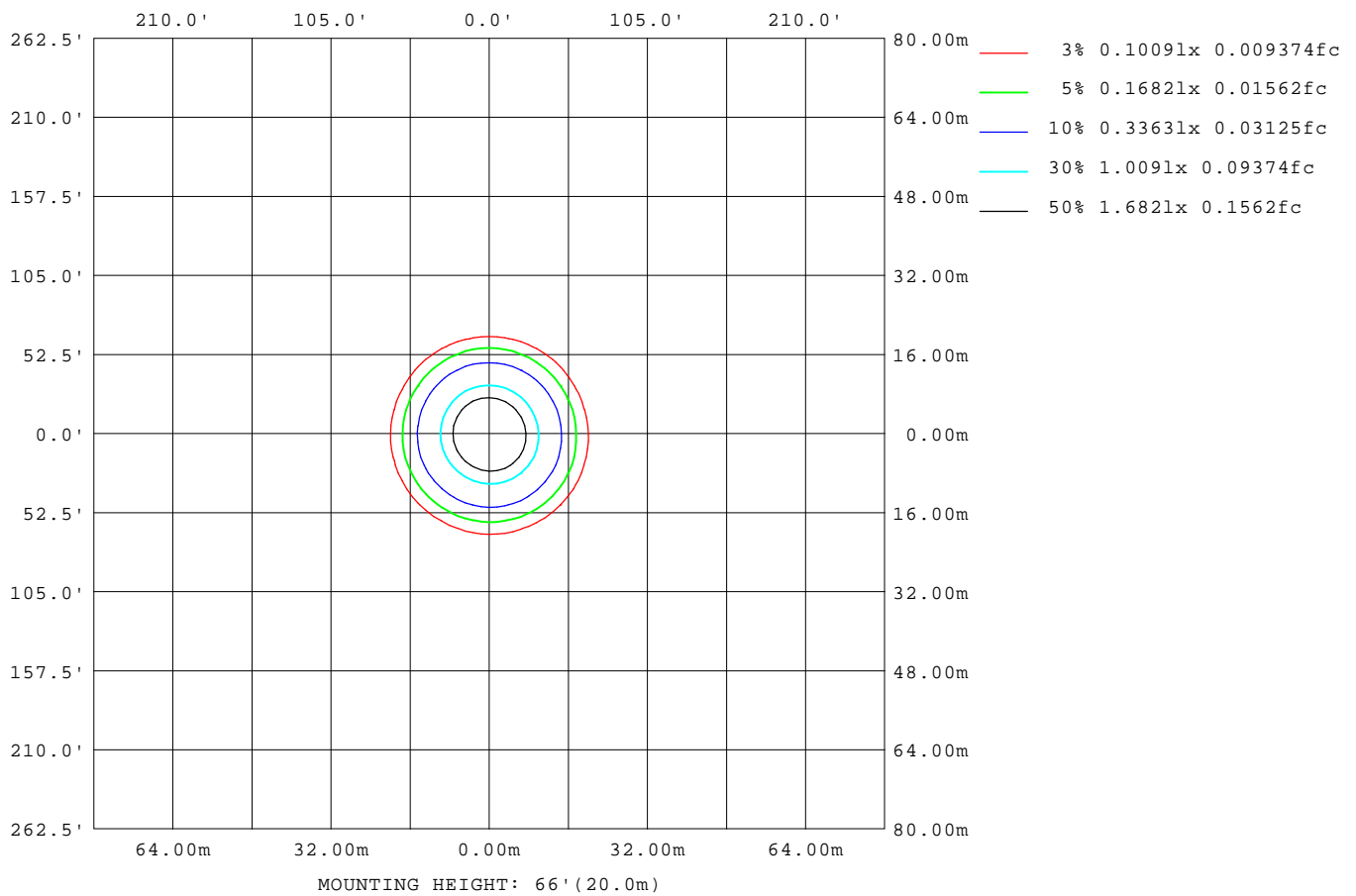
Note: The Curves indicate the illuminated area and the average illumination when the luminaire is at different distance.

C Range: 0 - 360DEG
C Interval: 30.0DEG
Test Speed: HIGH
Temperature: 25.3°C
Operators: zoe
Test Date: 2023-7-12

Range: 0 - 180DEG
Interval: 1.0DEG
Test System: EVERFINE GO-SPEX500_V1 SYSTEM V2.00.461
Humidity: 65.0%
Test Distance: 3.160m [K=1.0000]
Remarks: LAMP: BXR-V-DR-1830G-1000-K-23 Ra: 90
LENS: PM-1096C 50R
DRIVER: PUP20A-1WMC 450mA
30minutes warm-up

ISOLUX DIAGRAM

Test:U:120.07V I:0.1449A P:17.299W PF:0.9932 Freq:59.98Hz Lamp Flux:1493.63x1 lm		
NAME: 2118.192-LEA-15-DW	TYPE:	WEIGHT:
SPEC.: 3000K	DIM.:	SERIAL No.: 2307120894
MFR.: RISE	SUR.: 0.0063585m2	Shielding Angle:



C Range: 0 - 360DEG
C Interval: 30.0DEG
Test Speed: HIGH
Temperature:25.3℃
Operators:zoe
Test Date:2023-7-12

Range: 0 - 180DEG
Interval: 1.0DEG
Test System:EVERFINE GO-SPEX500_V1 SYSTEM V2.00.461
Humidity:65.0%
Test Distance:3.160m [K=1.0000]
Remarks: LAMP:BXRV-DR-1830G-1000-K-23 Ra:90
LENS: PM-1096C 50R
DRIVER: PUP20A-1WMC 450mA
30minutes warm-up

LED Avg.L Report

Test:U:120.07V I:0.1449A P:17.299W PF:0.9932 Freq:59.98Hz Lamp Flux:1493.63x1 lm		
NAME: 2118.192-LEA-15-DW	TYPE:	WEIGHT:
SPEC.: 3000K	DIM.:	SERIAL No.: 2307120894
MFR.: RISE	SUR.: 0.0063585m2	Shielding Angle:

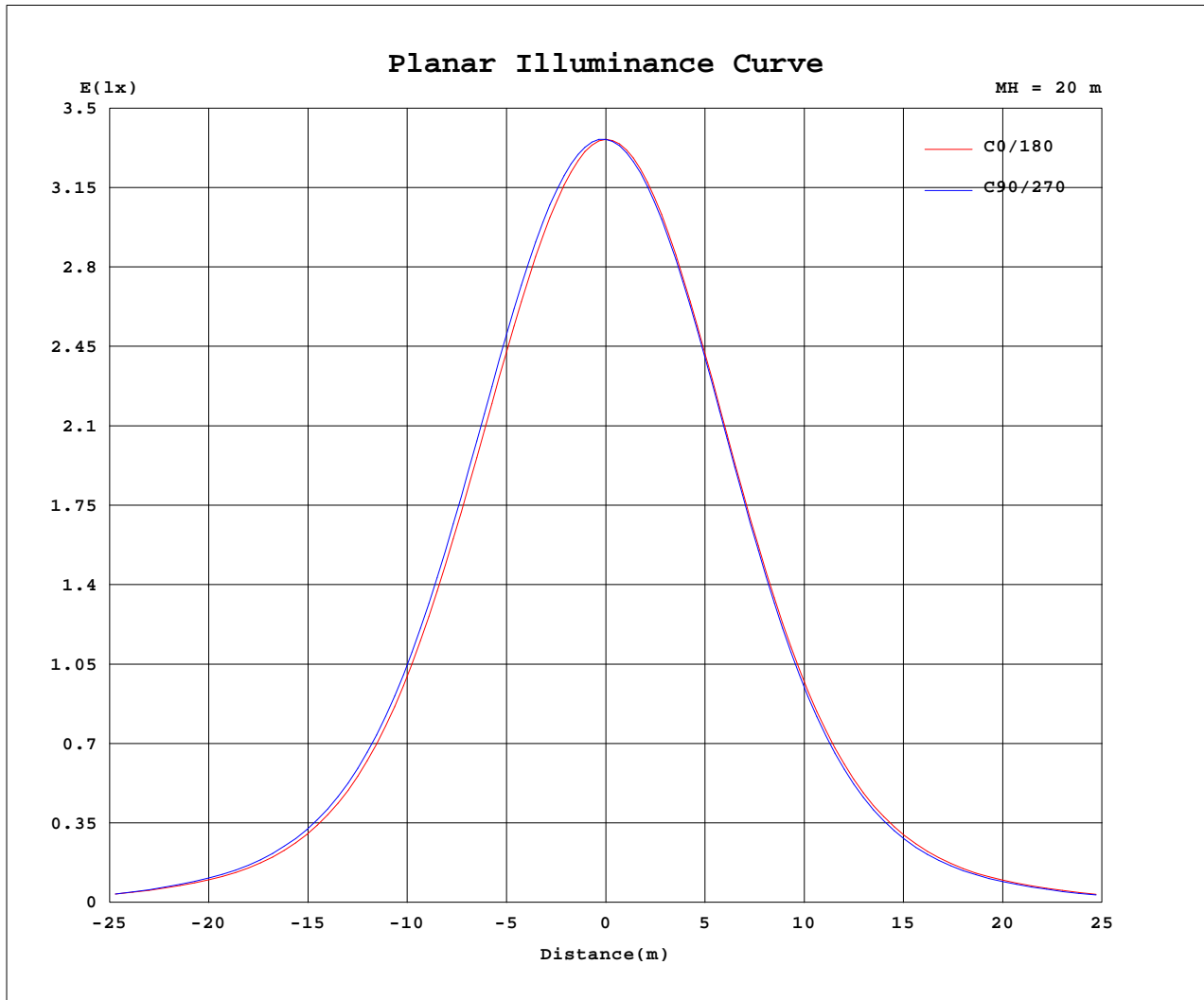
AvgL	cd/m2
L_0~180(65)av	2520
L_0~180(75)av	1336
L_0~180(85)av	863
L_90~270(65)av	1812
L_90~270(75)av	1100
L_90~270(85)av	369
L_45(65)av	2290
L_45(75)av	1204
L_45(85)av	538

Standard: GB/T 29293-2012

C Range: 0 - 360DEG
C Interval: 30.0DEG
Test Speed: HIGH
Temperature:25.3℃
Operators:zoe
Test Date:2023-7-12

Range: 0 - 180DEG
Interval: 1.0DEG
Test System:EVERFINE GO-SPEX500_V1 SYSTEM V2.00.461
Humidity:65.0%
Test Distance:3.160m [K=1.0000]
Remarks: LAMP:BXRV-DR-1830G-1000-K-23 Ra:90
LENS: PM-1096C 50R
DRIVER: PUP20A-1WMC 450mA
30minutes warm-up

Planar Illuminance Curve



C Range: 0 - 360DEG
 C Interval: 30.0DEG
 Test Speed: HIGH
 Temperature: 25.3 °C
 Operators: zoe
 Test Date: 2023-7-12

Range: 0 - 180DEG
 Interval: 1.0DEG
 Test System: EVERFINE GO-SPEX500_V1 SYSTEM V2.00.461
 Humidity: 65.0%
 Test Distance: 3.160m [K=1.0000]
 Remarks: LAMP: BXR-V-DR-1830G-1000-K-23 Ra: 90
 LENS: PM-1096C 50R
 DRIVER: PUP20A-1WMC 450mA
 30minutes warm-up



LUMINOUS DISTRIBUTION INTENSITY DATA

Test:U:120.07V I:0.1449A P:17.299W PF:0.9932 Freq:59.98Hz Lamp Flux:1493.63x1 lm		
NAME: 2118.192-LEA-15-DW	TYPE:	WEIGHT:
SPEC.: 3000K	DIM.:	SERIAL No.: 2307120894
MFR.: RISE	SUR.: 0.0063585m2	Shielding Angle:

Table--1

UNIT: cd

C(DEG) (DEG)	0	30	60	90	120	150	180	210	240	270	300	330						
0	1345	1345	1345	1345	1345	1345	1345	1345	1345	1345	1345	1345						
5	1303	1313	1317	1317	1311	1307	1308	1306	1306	1301	1298	1298						
10	1192	1218	1226	1219	1201	1193	1196	1197	1199	1187	1179	1179						
15	1028	1066	1076	1062	1034	1021	1024	1025	1029	1015	1005	1007						
20	830	869	879	863	832	819	816	814	819	807	800	805						
25	620	656	665	650	623	612	605	598	601	593	591	597						
30	430	459	465	455	435	428	420	411	411	406	406	412						
35	282	303	307	301	288	282	276	268	266	263	264	268						
40	179	193	196	193	184	180	176	169	168	165	167	170						
45	113	123	124	122	117	115	112	107	106	105	106	108						
50	68.6	74.2	72.3	70.4	69.6	69.4	67.2	64.6	62.6	61.3	63.7	65.0						
55	35.6	38.5	35.7	34.2	35.1	36.3	35.3	33.7	31.5	30.1	32.5	33.7						
60	16.6	18.1	14.1	12.8	15.1	17.2	16.7	15.7	12.6	11.7	14.2	15.7						
65	6.86	7.22	5.66	5.08	5.89	6.87	6.68	6.34	5.12	4.66	5.40	6.43						
70	3.16	3.21	2.59	2.56	2.59	3.15	3.08	2.95	2.71	2.70	2.72	2.99						
75	2.24	2.05	1.88	1.78	1.90	2.03	2.16	2.05	1.91	1.84	1.94	2.12						
80	1.26	1.18	0.99	0.91	1.01	1.19	1.31	1.15	0.98	0.93	1.02	1.17						
85	0.44	0.37	0.26	0.22	0.27	0.40	0.51	0.36	0.22	0.18	0.23	0.32						
90	0.00	0.00	0.00	0.00	0.00	0.00	0.00	0.00	0.00	0.00	0.00	0.00						
95	0.00	0.00	0.00	0.00	0.00	0.00	0.00	0.00	0.00	0.00	0.00	0.00						
100	0.00	0.00	0.00	0.00	0.00	0.00	0.00	0.00	0.00	0.00	0.00	0.00						
105	0.00	0.00	0.00	0.00	0.00	0.00	0.00	0.00	0.00	0.00	0.00	0.00						
110	0.00	0.00	0.00	0.00	0.00	0.00	0.00	0.00	0.00	0.00	0.00	0.00						
115	0.00	0.00	0.00	0.00	0.00	0.00	0.00	0.00	0.00	0.00	0.00	0.00						
120	0.00	0.00	0.00	0.00	0.00	0.00	0.00	0.00	0.00	0.00	0.00	0.00						
125	0.00	0.00	0.00	0.00	0.00	0.00	0.00	0.00	0.00	0.00	0.00	0.00						
130	0.00	0.00	0.00	0.00	0.00	0.00	0.00	0.00	0.00	0.00	0.00	0.00						
135	0.00	0.00	0.00	0.00	0.00	0.00	0.00	0.00	0.00	0.00	0.00	0.00						
140	0.00	0.00	0.00	0.00	0.00	0.00	0.00	0.00	0.00	0.00	0.00	0.00						
145	0.00	0.00	0.00	0.00	0.00	0.00	0.00	0.00	0.00	0.00	0.00	0.00						
150	0.00	0.00	0.00	0.00	0.00	0.00	0.00	0.00	0.00	0.00	0.00	0.00						
155	0.00	0.00	0.00	0.00	0.00	0.00	0.00	0.00	0.00	0.00	0.00	0.00						
160	0.00	0.00	0.00	0.00	0.00	0.00	0.00	0.00	0.00	0.00	0.00	0.00						
165	0.00	0.00	0.00	0.00	0.00	0.00	0.00	0.00	0.00	0.00	0.00	0.00						
170	0.00	0.00	0.00	0.00	0.00	0.00	0.00	0.00	0.00	0.00	0.00	0.00						
175	0.00	0.00	0.00	0.00	0.00	0.00	0.00	0.00	0.00	0.00	0.00	0.00						
180	0.00	0.00	0.00	0.00	0.00	0.00	0.00	0.00	0.00	0.00	0.00	0.00						

C Range: 0 - 360DEG
C Interval: 30.0DEG
Test Speed: HIGH
Temperature:25.3℃
Operators:zoe
Test Date:2023-7-12

Range: 0 - 180DEG
Interval: 1.0DEG
Test System:EVERFINE GO-SPEX500_V1 SYSTEM V2.00.461
Humidity:65.0%
Test Distance:3.160m [K=1.0000]
Remarks: LAMP:BXRV-DR-1830G-1000-K-23 Ra:90
LENS: PM-1096C 50R
DRIVER: PUP20A-1WMC 450mA
30minutes warm-up